



JCVISION Interactive Projector

Qmax for Smart Education

LED ultra-short focus interactive projector with Built-in PC

Calle Corona Boreal número 94 Bis , Colonia Prado
Churubusco , Alcaldía Coyoacán , Ciudad De México
Código Postal 04230
www.corporacionmultimedia.com.mx
ventas1@corporacionmultimedia.com.mx

Tels.:55 2473 0909
55 5535 2738
Lada sin costo: 01-800-2675-267







The Most Economical Solution for Classroom

- Low Purchasing Cost
- Low Maintenance Cost
- Low Installation Cost

Highly Integration

Projector, pc, interactive whiteboard
and speaker functions all in one.

Cost Comparison



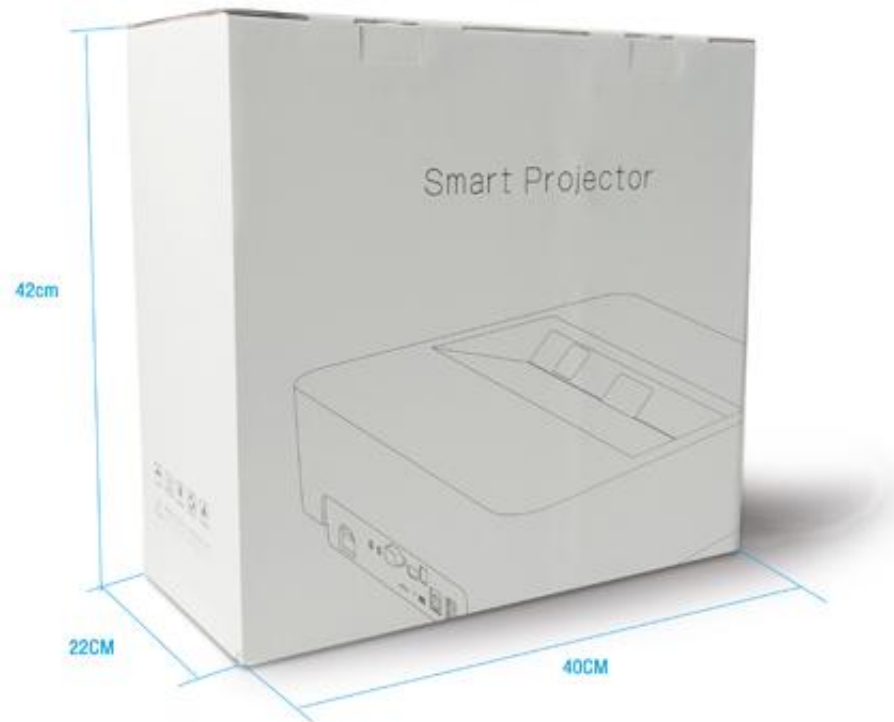
VS



1 Cable Supply All Parts Working.

- Only 1 cable is needed, reducing labor cost of installing machine.
- Easy to take and portable to move everywhere to use it.



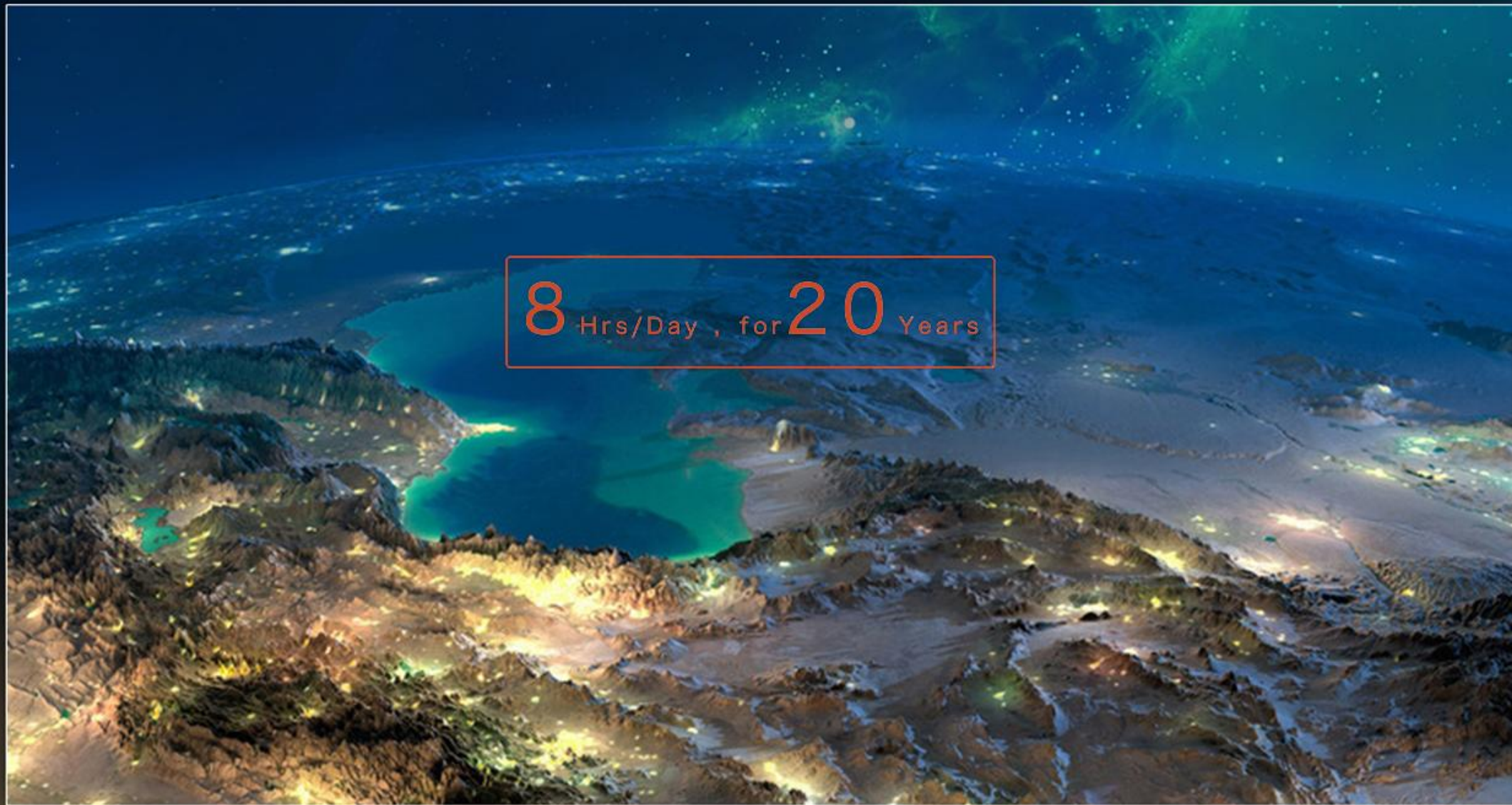


Small Package, low transportation cost



LED Technology

- 20000hrs life time (Min)
- Cold light sources



8 Hrs/Day , for 20 Years



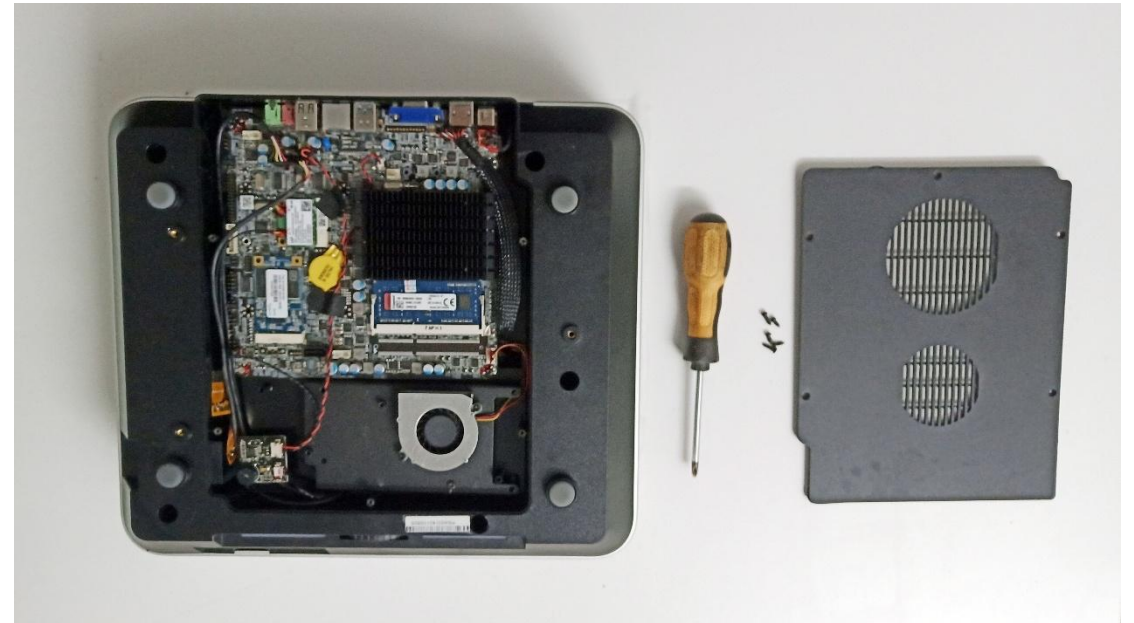
Lower Down Failure Rate of Lamp



- No need worry about if power cuts suddenly, lamp would be damage like normal projectors.
- Can power on in time without waiting of cooling fans stopped working.
- Reduce maintenance costs of lamp.

Modular Design for PC Parts

- Can uninstall PC module directly to replace the broken parts.
- Reduce maintenance costs of PC



Skillfully Use Projection Film!



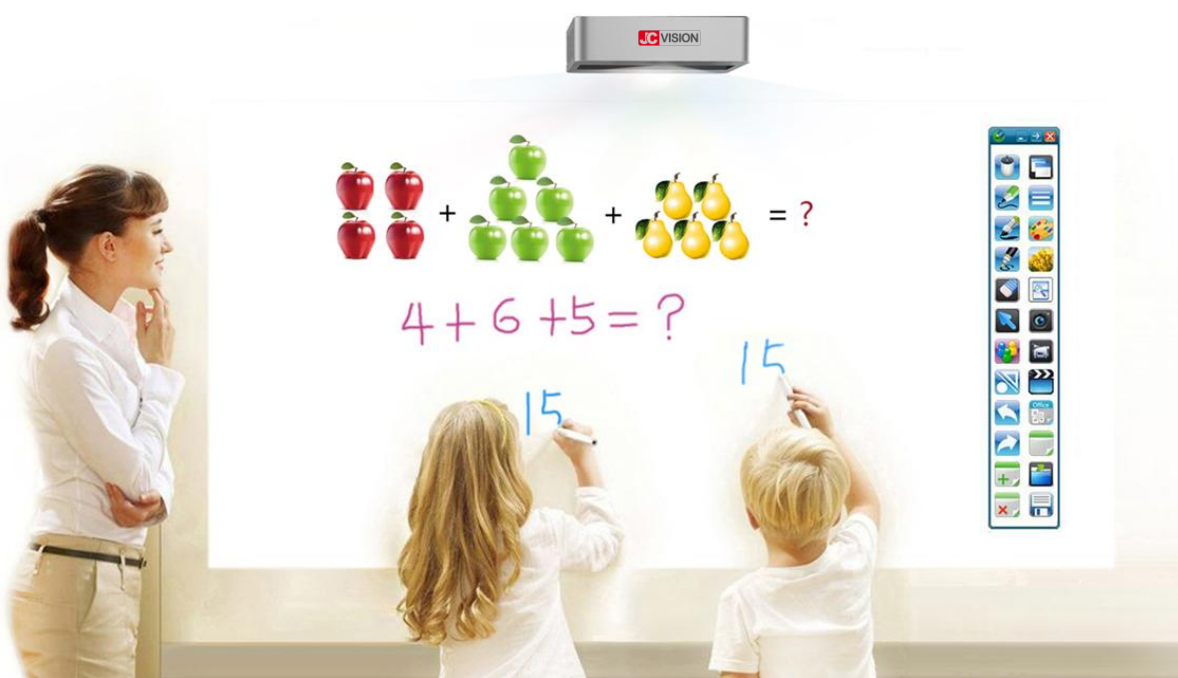
- Can be stick to wall to replace the whiteboard.
- No need screw on wall, save installation cost.

Advantages





The Shortest Distance, No Shadow



Support 64(Max) persons writing at same time.

Interactive Software for Education



Property:



New Electronic Pen

Combined with ergonomics, curved body design, makes your hand more comfortable when writing with it.





High Configuration Options

PC: i3/i5/i7 (Optional), 4G/8G or higher RAM, 500GB/1TB HD as options.



Windows & Android Dual System

Specifications

Items		Specifications	
		Projection	
Brightness		800 lumens(ANSI 2500lumens)	
Resolution		1280*800	
Projection Method		DMD TI 0.45", WXGA-800	
Projection Distance		0.2-2m	
Projection Ratio		80"@ 0.383m	
Lamp Life		20000 hours	
Speaker		10W	
Power		144W	
Product Size		34*30*13cm	
		Items	Windows
Configuration	Version	Windows7, Windows 8 or higher	
	RAM	4GB/6GB/8GB (Optional)	
	HDD	500GB/1TB (Optional)	
	CPU	1900/i3/i5/i7 (Optional)	
	Wi-Fi	2.4G	
	Bluetooth	4.0	
			Android
		4.4 or higher	
		2GB DDR3	
		16GB	
		4 core	
		2.4GHz / 5GHz	
		4.0	
		Interactive Function	
Movement Detection Technology		Infrared	
Active Area(Max Projection Size)		300 inches	
Power		DC 5V (USB)	
		Interactive Function	
Movement Detection Technology		LED light	
Pen Body Dimension		15*1.5cm	
Weight		20g	

Applications

Interactive Education





Meeting Room

Home Theater





Bar





Game



Archery System





Children's Playground

Ball Hitting Game



JC Qmax in the World